

## Carbide Dowel Pins / Custom Dowel Pins

### Solid Carbide Dowel PIN DIN 6325 Parallel Specification

Carbide Dowels are solid pins, generally precision ground to narrow limits to permit accurate fitting. Precision dowels are used to hold parts together in a fixed alignment relying on the tightness of fit to stay in place.

Our stocked range includes carbide to ISO and DIN standards. Carbide dowel pins can manufacture to customer specifications and small diameter dowels are our specialty. We offer a fast-turnaround, competitive pricing, longer lengths up to 330mm (13.0 inches), diameters up to 32mm (1-1/4 inches) and have experience across all industries.

Our engineers understand that not all standard dowel pins are appropriate for demanding applications or specialist projects, and it can be difficult to source the exact dowel for your specific needs. With our machining capabilities we can create a dowel pin designed to the purpose for which it is intended. Our following diameter and length are:

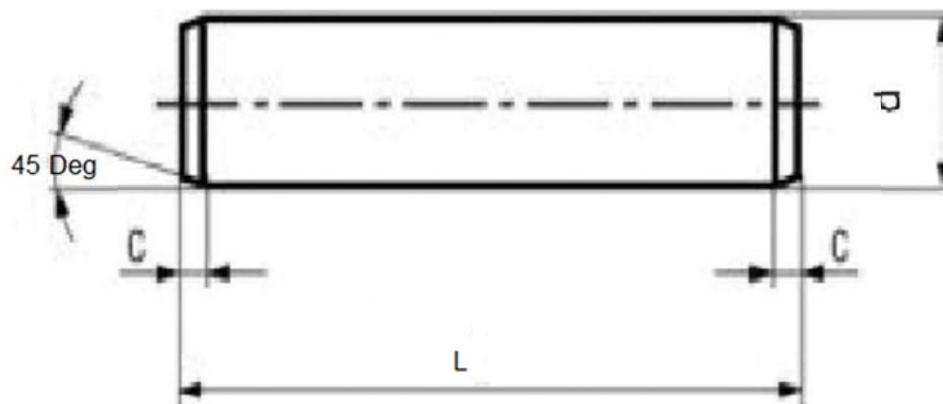
Diameter: 1.5875mm to 32mm (1/16 to 1-1/4")

Length: 3.0mm to 330mm (1/8" to 13.0")

Diameter Tolerances: h6 (+0"/-.0005")

Length: (+.005" / - .005")

Din6325 parallel dowel pins are supplied in hardened to 91.7-92.3HRA. They are manufactured in tungsten carbide.



## Carbidetek Carbide Dowel Pins

Item#	Dia. Measure	Dia	Dia	Overall Length	Chamfer
Dowel-0464	Inches	1/16	0.0625	1/2~13"	No / 45-Deg
Dowel-0664	Inches	3/32	0.0938	1/2~13"	No / 45-Deg
Dowel-0864	Inches	1/8	0.1250	1/2~13"	No / 45-Deg
Dowel-1264	Inches	3/16	0.1875	1/2~13"	No / 45-Deg
Dowel-1664	Inches	1/4	0.2500	1/2~13"	No / 45-Deg
Dowel-2064	Inches	5/16	0.3125	1/2~13"	No / 45-Deg
Dowel-2464	Inches	3/8	0.3750	1/2~13"	No / 45-Deg
Dowel-2864	Inches	7/16	0.4375	1/2~13"	No / 45-Deg
Dowel-3264	Inches	1/2	0.5000	1/2~13"	No / 45-Deg
Dowel-4064	Inches	5/8	0.6250	1/2~13"	No / 45-Deg
Dowel-4864	Inches	3/4	0.7500	1/2~13"	No / 45-Deg
Dowel-6464	Inches	1	1.0000	1/2~13"	No / 45-Deg
Dowel-8064	Inches	1 1/4	1.2500	1/2~13"	No / 45-Deg
Dowel-2.0mm	mm	2.0		1/2~3.5"	No / 45-Deg
Dowel-3.0mm	mm	3.0		1/2~3.5"	No / 45-Deg
Dowel-4.0mm	mm	4.0		1/2~3.5"	No / 45-Deg
Dowel-6.0mm	mm	6.0		1/2~3.5"	No / 45-Deg
Dowel-8.0mm	mm	8.0		1/2~3.5"	No / 45-Deg
Dowel-10.0mm	mm	10.0		1/2~3.5"	No / 45-Deg
Dowel-12.0mm	mm	12.0		1/2~3.5"	No / 45-Deg

